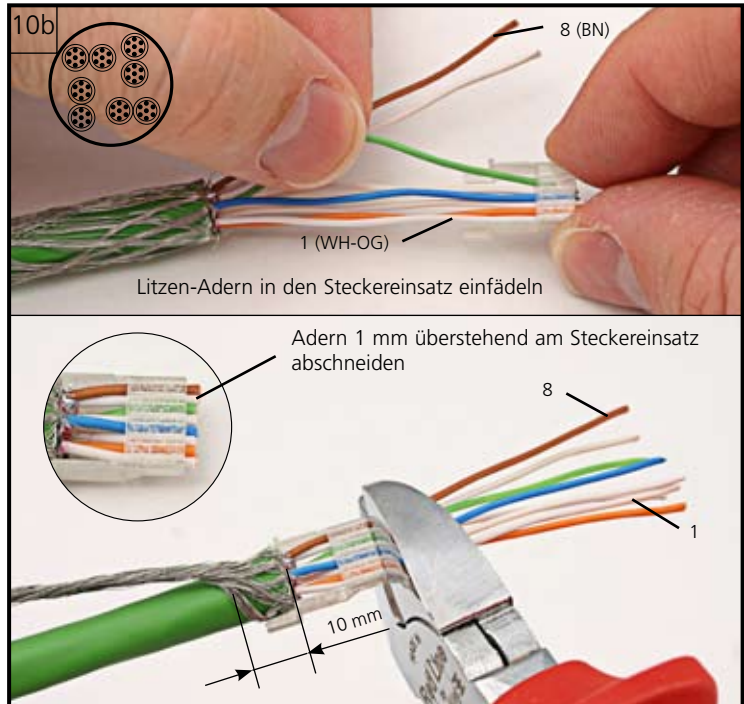
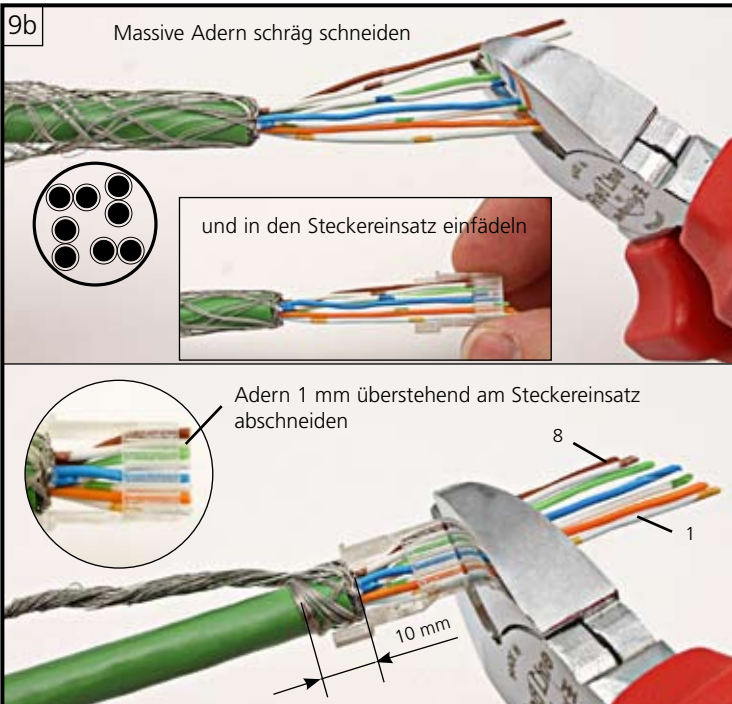
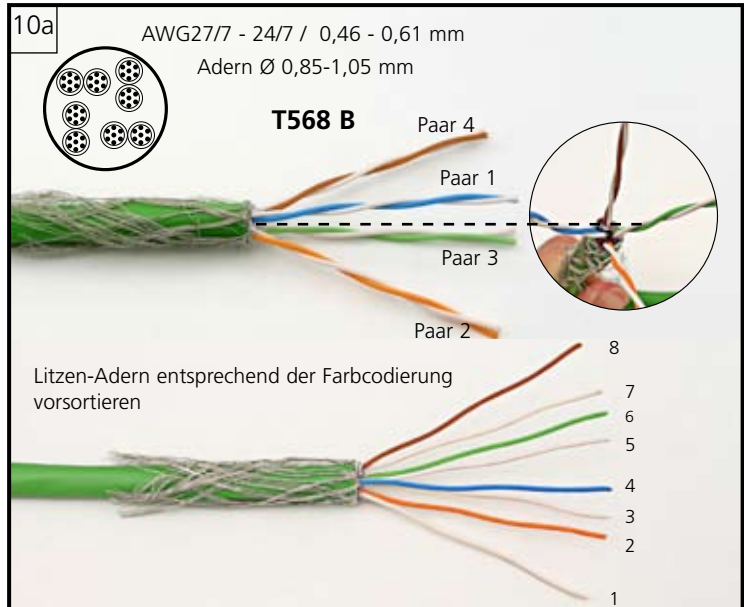
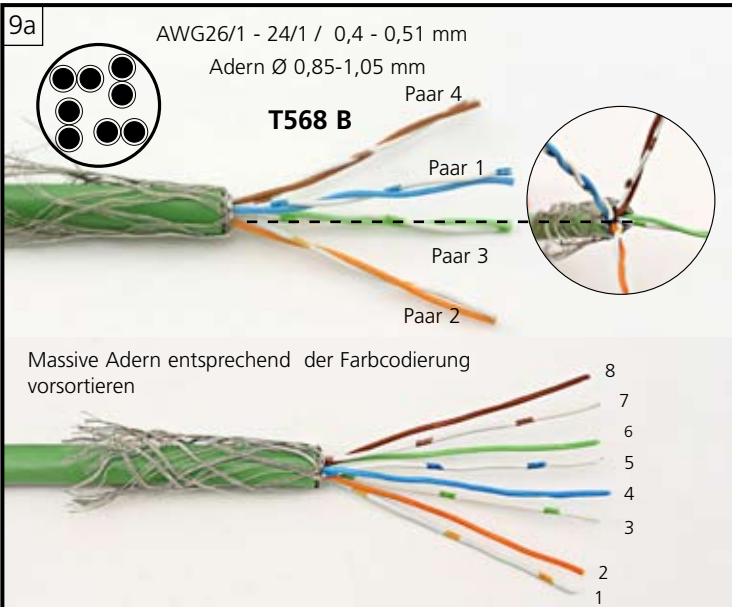
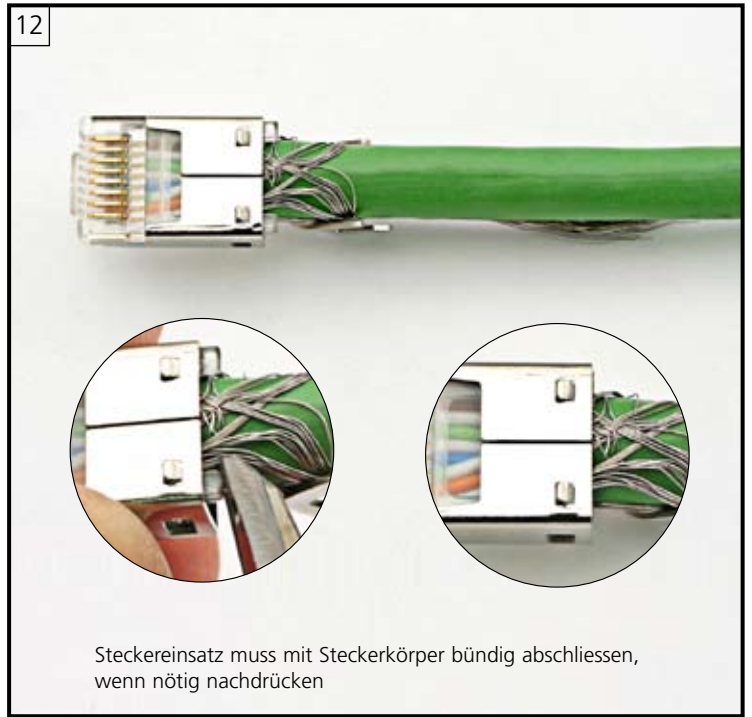
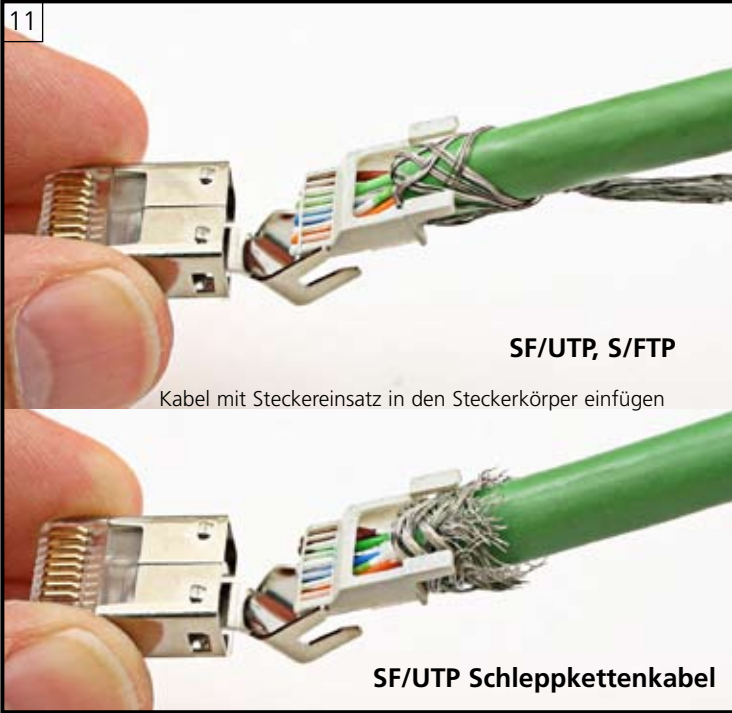


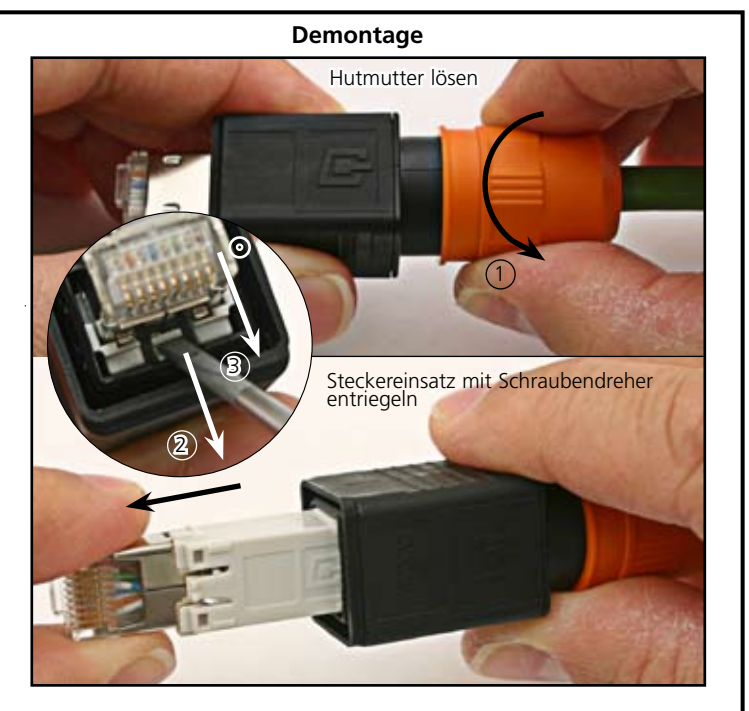
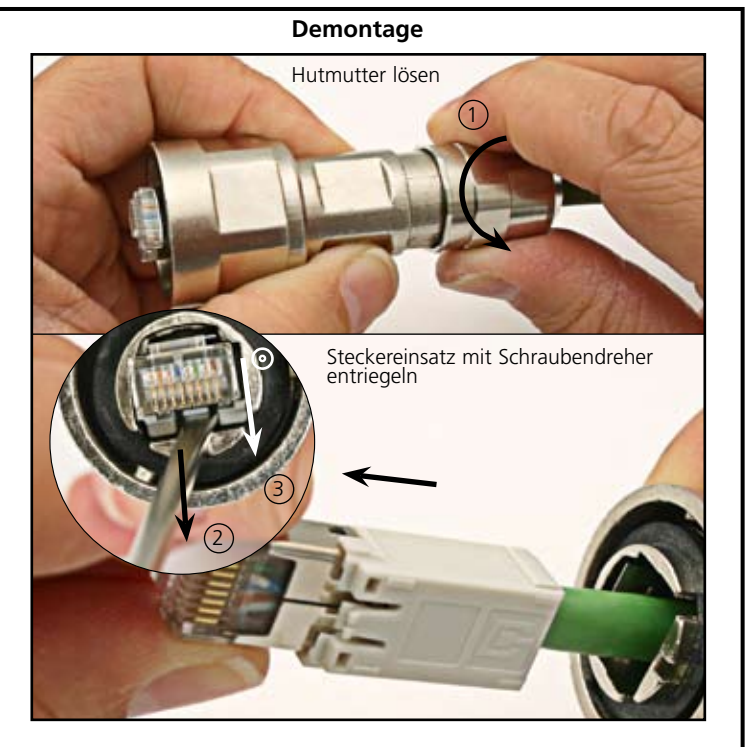
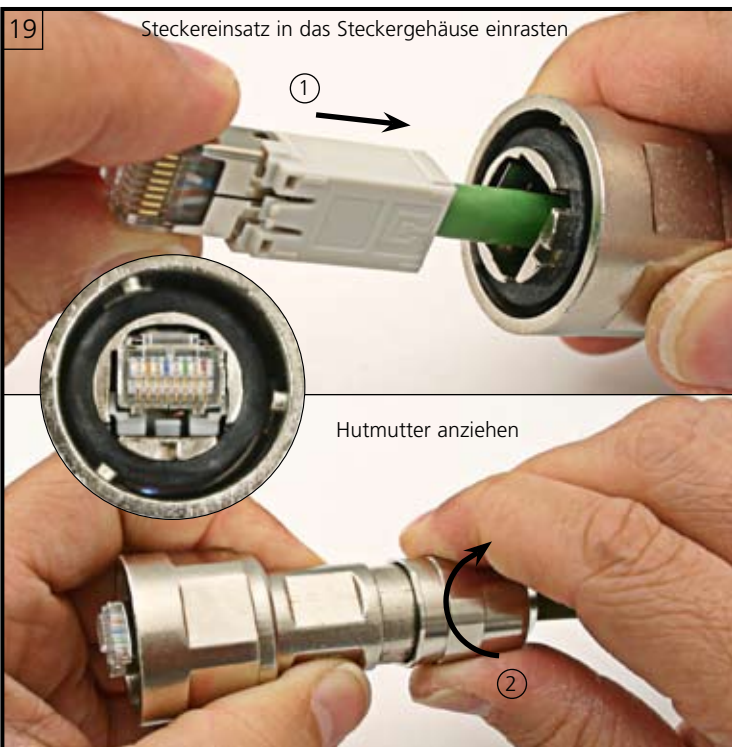


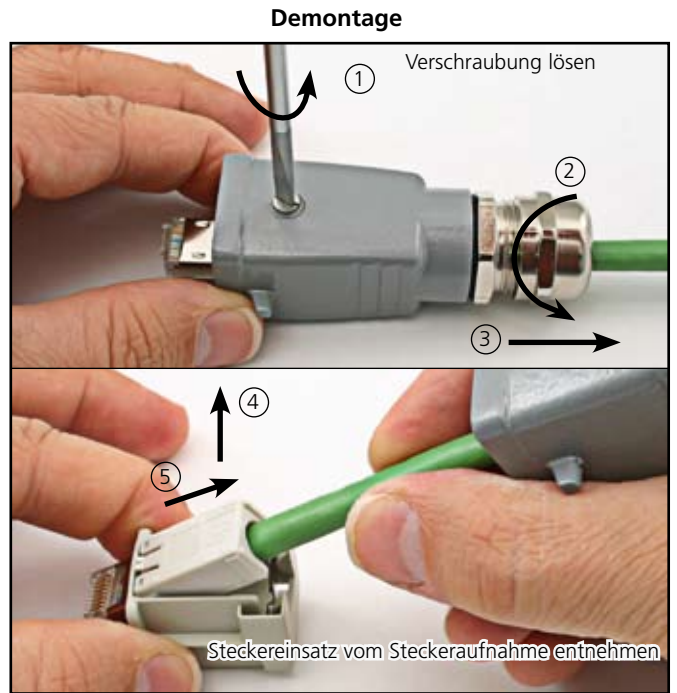
8

Anschlussbelegung					Verbindung		Anwendung								
RJ45 PIN Nr.	Farbcode T568		DIN 47100	Industrie	1:1	1GBT gekreuzt	RJ45 PIN Nr.	10BT/ 100BT	Gigabit Ethernet	Token Ring ISDN/So	TP-PMD/ ATM	ISDN/ So	Upo/ TEL		
	A	B													
1	WH-GN	WH-OG	WH	YE	1-1	1-3	1	•	•		•				
2	GN	OG	BN	OG	2-2	2-6	2	•	•		•				
3	WH-OG	WH-GN	GN	WH	3-3	3-1	3	•	•	•		2a			
4	BU	BU	YE	-	4-4	4-7	4		•			1a	•		
5	WH-BU	WH-BU	GY	-	5-5	5-8	5		•	•		1b	•		
6	OG	GN	PK	BU	6-6	6-2	6	•	•	•		2b			
7	WH-BN	WH-BN	BU	-	7-7	7-4	7		•		•				
8	BN	BN	RD	-	8-8	8-5	8		•		•				

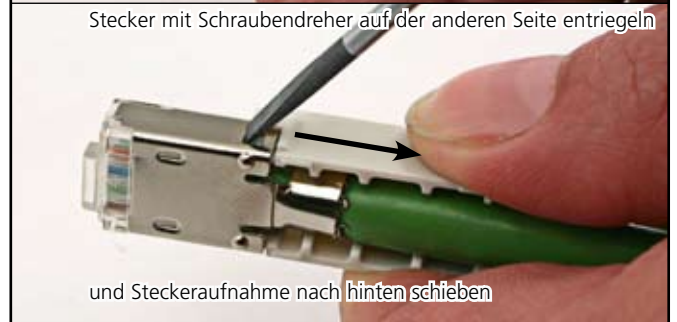
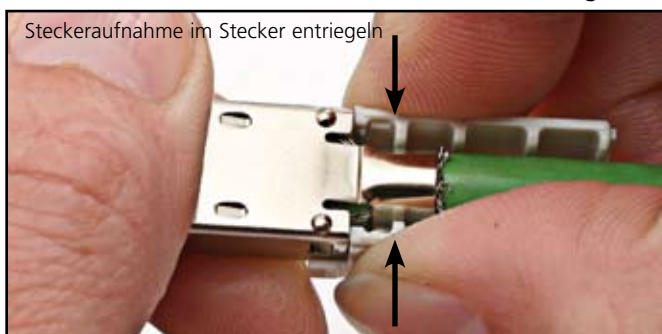








Demontage des Steckereinsatzes



1 Scope of delivery: **STX V1 RJ45 plug set Cat.6** 2

J80026A0005 J80026A0006

J80026A0009 J80026A0010

3 Scope of delivery: **STX V4 RJ45 plug set Cat.6** 4

J80026A0013 J80026A0014

5 Scope of delivery:
STX V5 RJ45 plug set Cat.6
 J80026A0017

6

Stripping length min. 1.6 in.

remove the cable jacket to approx. 1.6 in.

7a **SF/UTP** slide braided shield over the cable jacket

1. score and remove the foil screen
 2. score and remove the synthetic foil

7b **SF/UTP** Drag chain cable

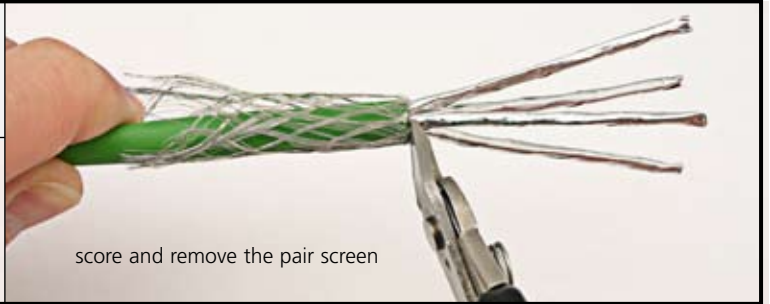
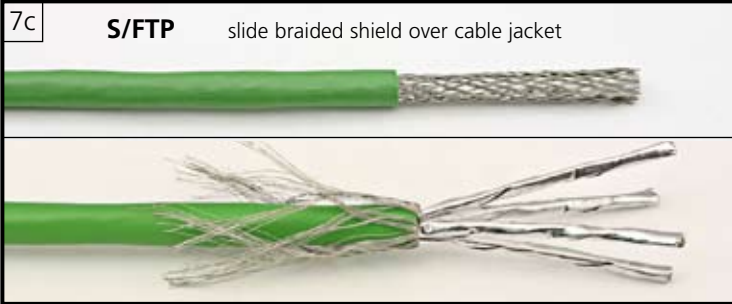
cut off braided shield to approx. 0.4 in. and slide it over the cable jacket

score and remove the aluminum laminated foil

remove the vylene

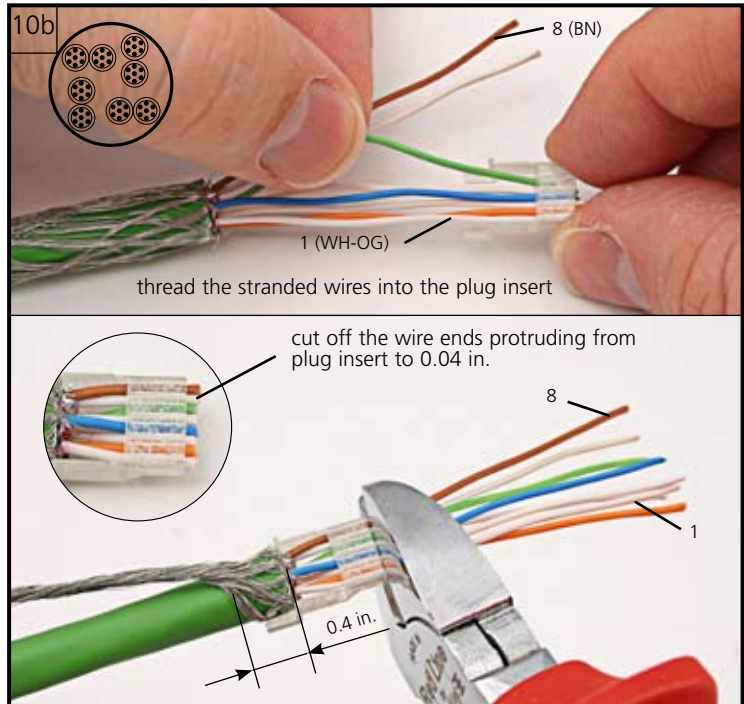
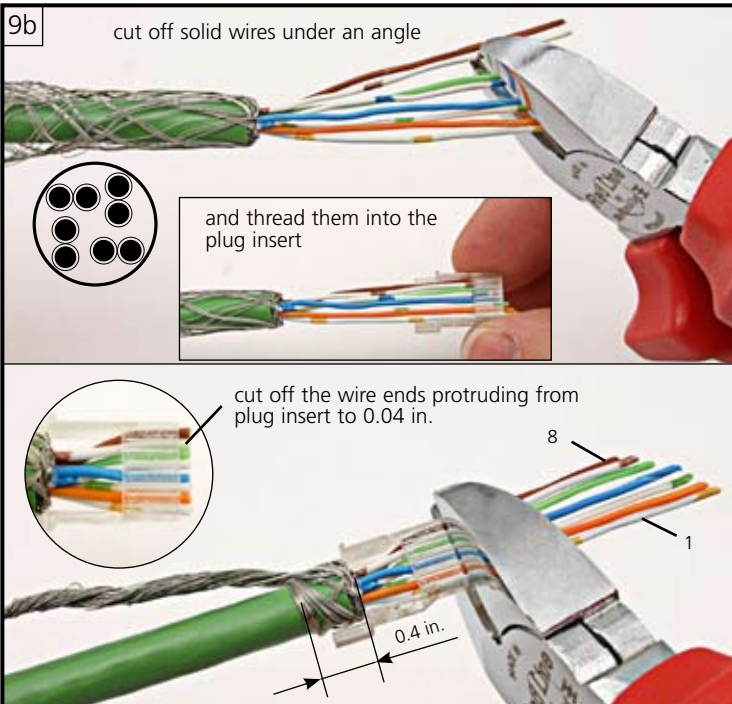
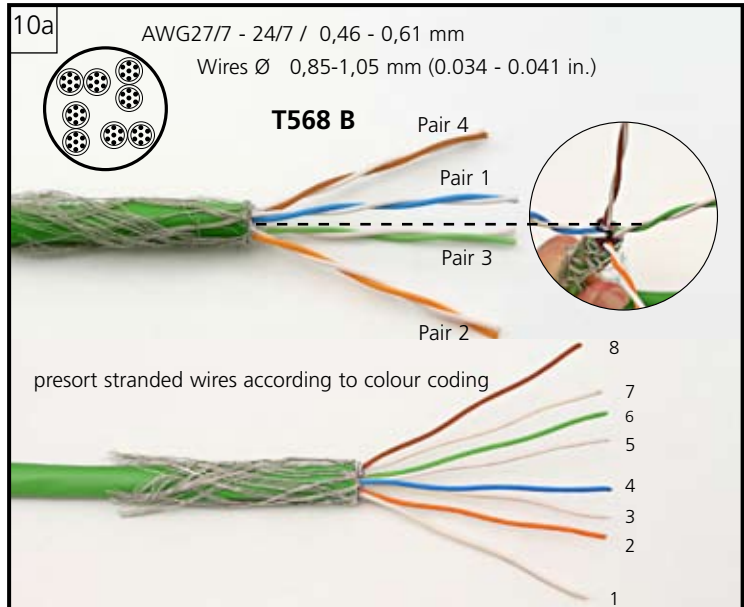
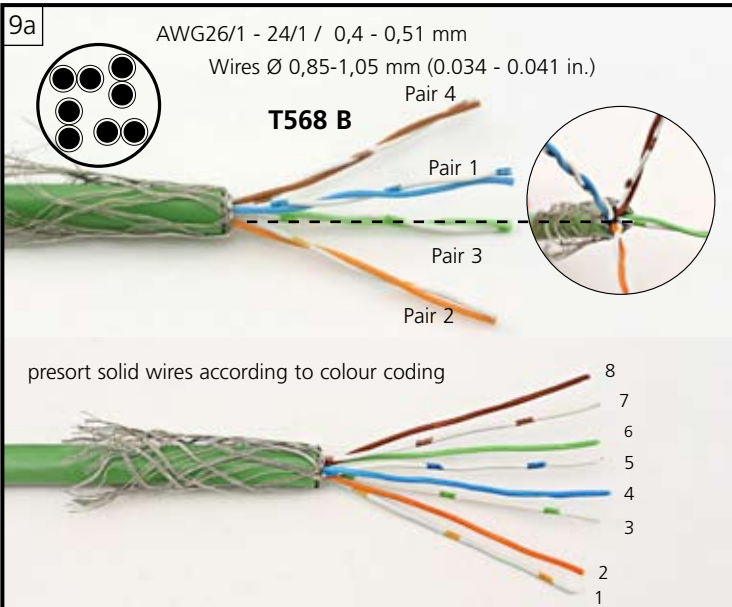
cut off the filler

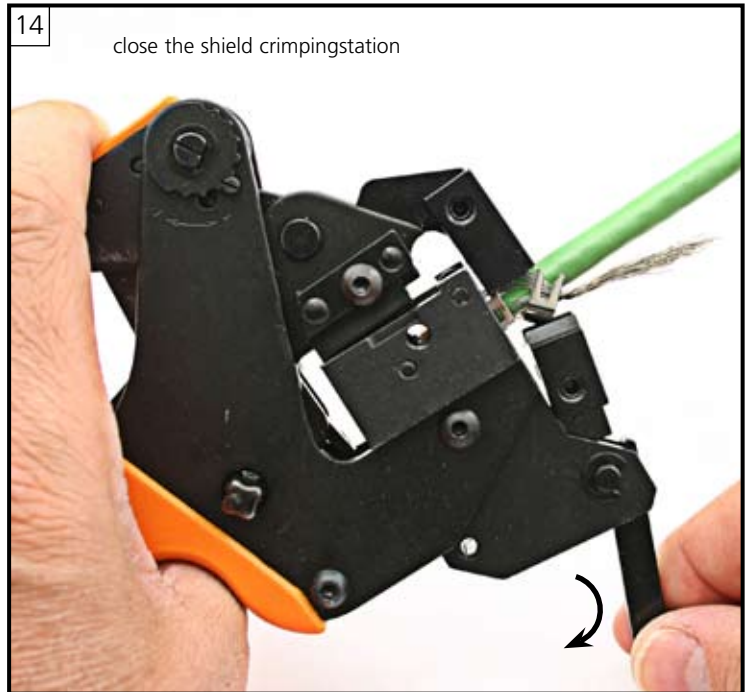
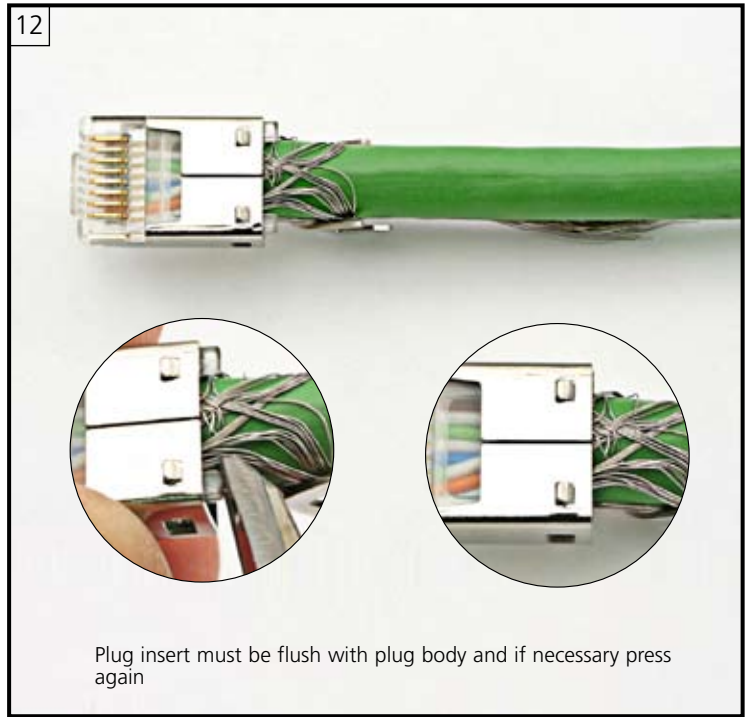
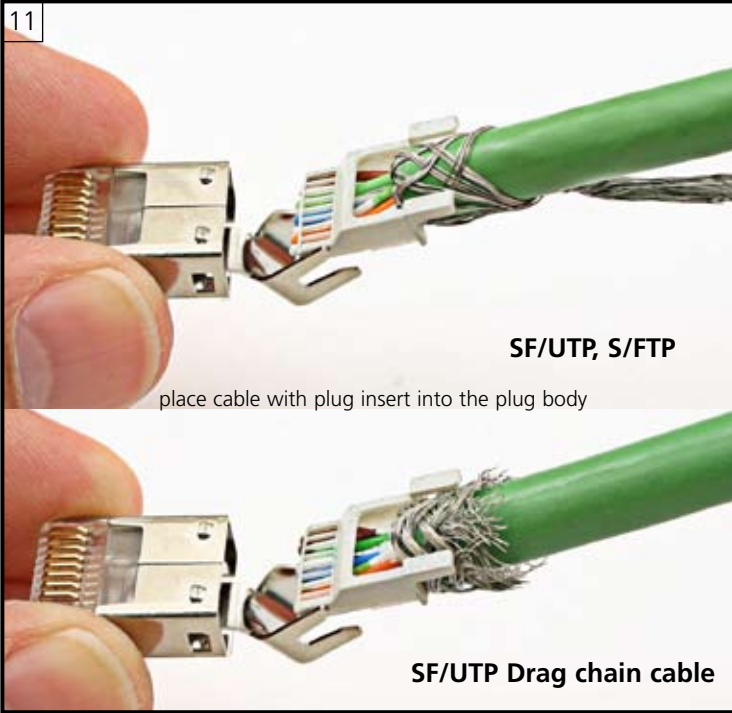
D 885030A0318 15.03.2008© by Telegärtner

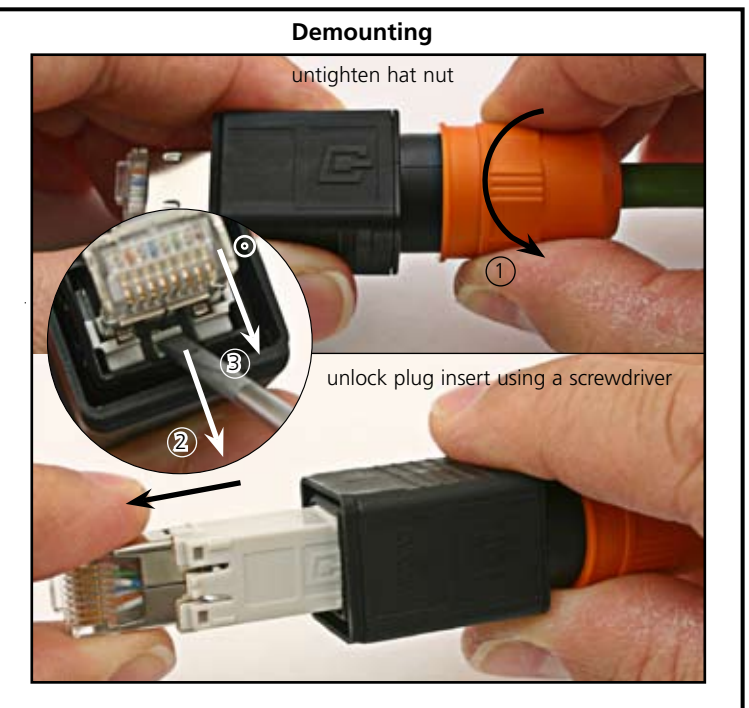
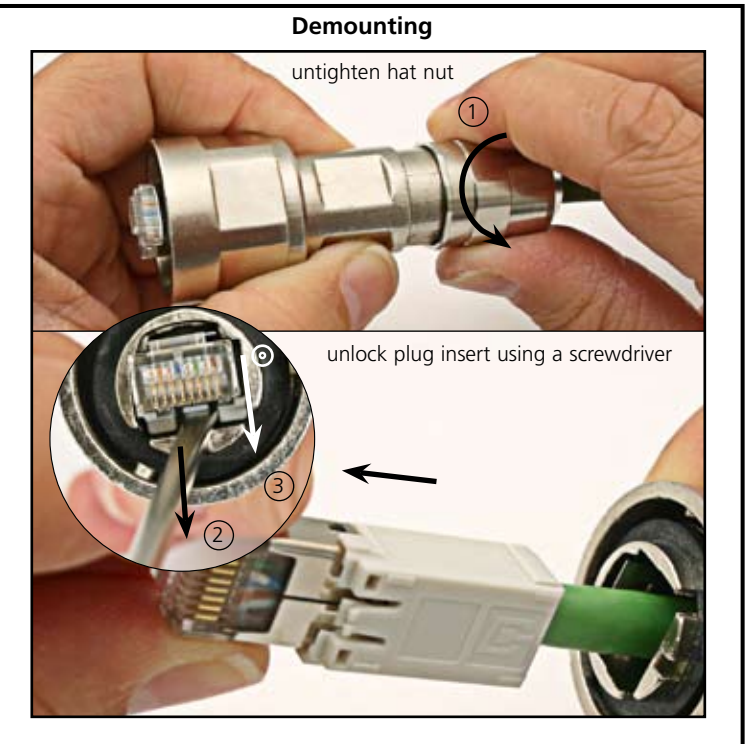
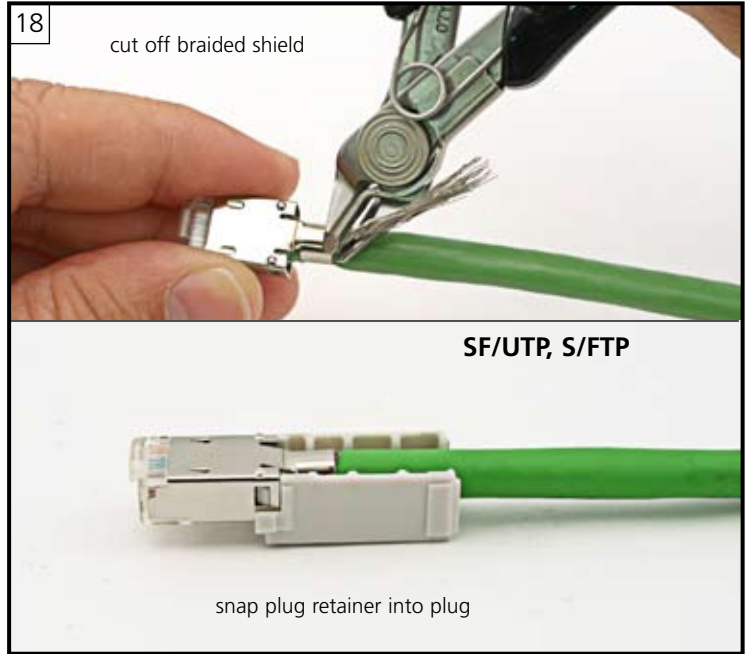


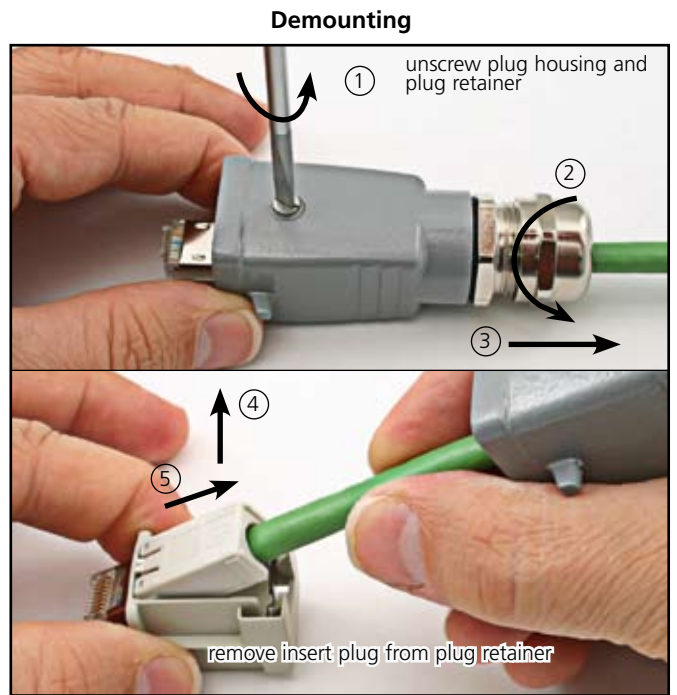
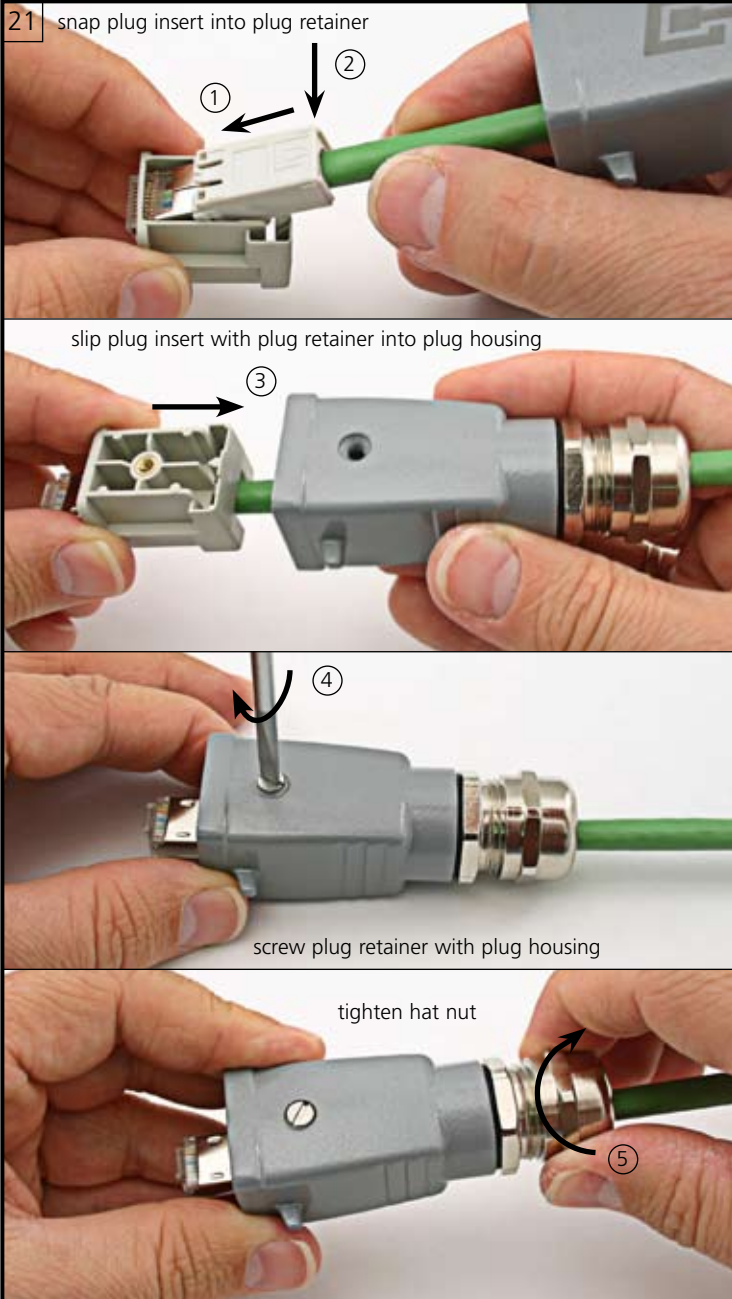
8

PIN assignments					Connection		Application						
RJ45 PIN No.	Colour code T568		DIN 47100	Industrial	1:1	1GBT crossover	RJ45 PIN No.	10BT/ 100BT	Gigabit Ethernet	Token Ring ISDN/So	TP-PMD/ ATM	ISDN/ So	Upo/ TEL
	A	B											
1	WH-GN	WH-OG	WH	YE	1-1	1-3	1	•	•		•		
2	GN	OG	BN	OG	2-2	2-6	2	•	•		•		
3	WH-OG	WH-GN	GN	WH	3-3	3-1	3	•	•	•		2a	
4	BU	BU	YE	-	4-4	4-7	4		•			1a	•
5	WH-BU	WH-BU	GY	-	5-5	5-8	5		•			1b	•
6	OG	GN	PK	BU	6-6	6-2	6	•	•			2b	
7	WH-BN	WH-BN	BU	-	7-7	7-4	7		•		•		
8	BN	BN	RD	-	8-8	8-5	8		•		•		









Demontage of plug insert

